

LED Turn Signal Installation Manual

Ford F150/250 1997-04 (Heritage) *

Items included in this bag:

2 Black/Red LED Extension Wires
2 Red Wire Taps
2 Ring connectors
1 Installation Manual

Required tools for this installation:

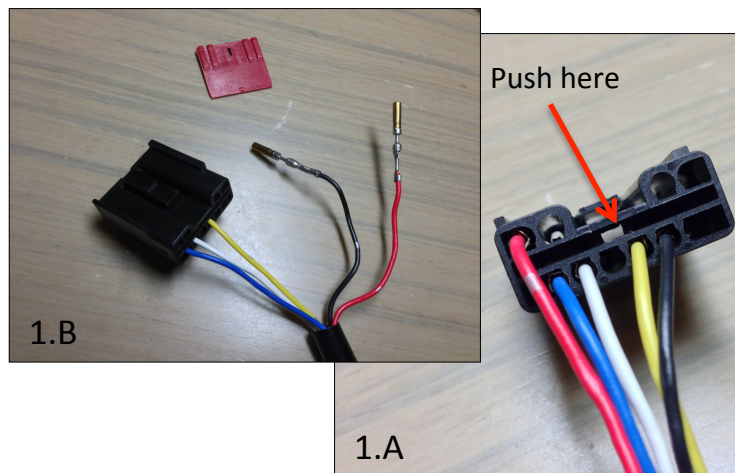
Small flat screwdriver – Eye Glasses Grade
Electrical tape
Gopher wire
Multimeter (Wire Tester)
Needle nose pliers
Sturdy gloves
Safety glasses or goggles



Notice: You don't need to use this installation manual and its accessories if the opposite plug connecting to your original mirror wiring harness use a black 10-pin plug that has been pre-wired with the turn signal wiring. Use the diagram 1.A below to verify if your door wiring harness already have the turn signal wires pre-wired in at the designated pin locations. For pre-wired models, the LED turn signal will simply be plug & play.

Preface: This manual doesn't include the removal/reinstallation of the original mirrors, door panels, plastic moldings, and trim pieces as there is an abundance of YouTube videos and online forums that illustrate the procedure if you are not familiar with the process. However, if you are not comfortable with the task involved or don't have the necessary tools, please have a professional installer perform the installation. Thank you!

This installation manual will demonstrate where to splice into the vehicle's turn signal wiring to draw power for the mirror-head mounted LED turn signal to work for models that don't have pre-wired turn signal wiring in their door wiring harness. For manual mirrors with turn signals, proceed directly to Step 3 and omit Step 1 & 2.

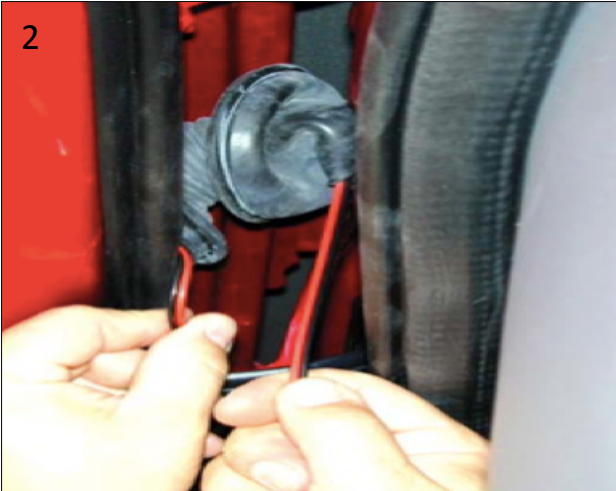


1. After determining that your model doesn't have the turn signal wiring pre-wired, remove the LED wires from the new mirror's black plug by inserting a small flat screwdriver as shown in 1.A to push the red tab out first. Then, unplug the RED(+)/BLACK(-) wires by firmly pulling on the wires shown in 1.B. (Note: LED is polarity sensitive.) Replace the red tab back into the plug. Bolt the mirrors onto the door. Determine if you have the gray 3-pin plug or the black 10-pin plug. Use the included mini adapter if you have the 3-pin plug. Otherwise, run the wiring harness the same way into the door shell.

2. Use the included extension wire and electrical tape them separately to the RED/BLACK wires from the mirror harness.

3. After connecting the LED extension wires, run the extension wires inside the door shell and down to the rubber boot and avoid window rail as wires can potentially get caught by the operation of the window. Pull the rubber boot out between the door and the door frame. Pass the wire harness (with the help of the gopher wire) into the vehicle by going through the opening vacated by the rubber boot.

* These mirrors don't fit F150/250 2001-03 Super Crew Cab.



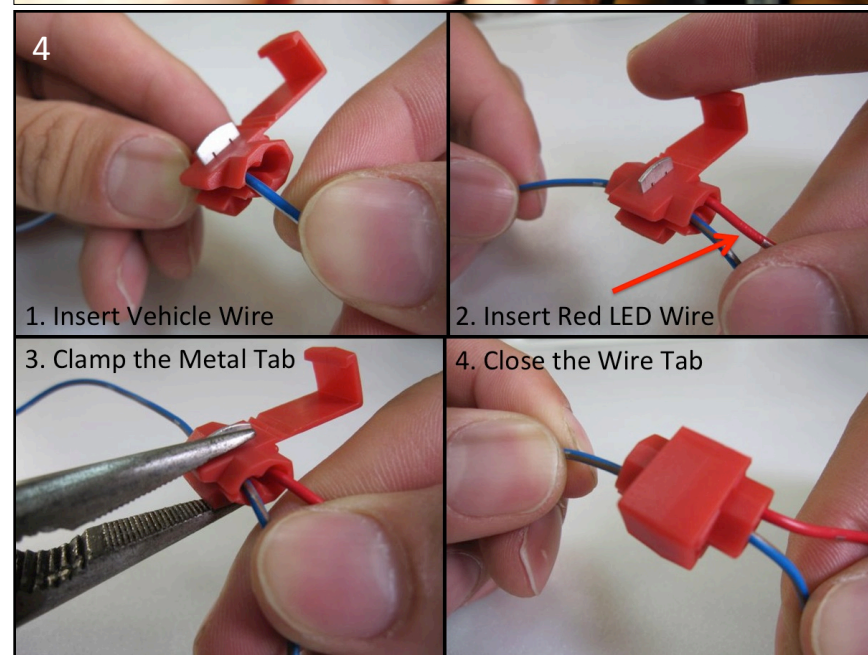
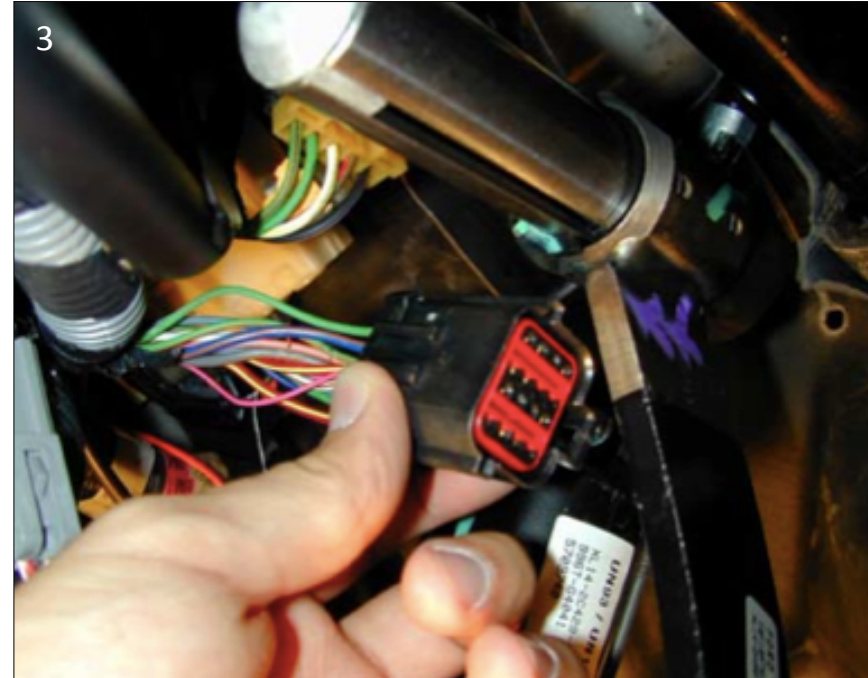
3. The electrical wiring for the turn signals is located just below and left of the steering column. Locate the GREEN WITH WHITE STRIPE wire from within the wire bundle. Turn the ignition key so that electrical power is on and activate the driver side turn signal. Probe the wire with the wire tester to verify that flashing turn signal power is present. This is your driver side turn signal wire(+). Then, locate the WHITE WITH BLUE STRIPE wire from within the wire bundle. Activate the passenger

side turn signal and probe the wire to verify that flashing turn signal power is present. This is your passenger turn signal wire(+). Make sure the LED wires are routed securely throughout under the dash and enough slack is prepared for splicing.

4. Using the included red wire taps, and follow the four steps on the right to splice the red LED wires (+) into the signal wires that were just located previously respectively. Be careful not to splice the LED wires into the wrong orientations.



5. Strip and twist together the ends of the black wires from each extension wires. Crimp them together in the supplied ring connector. A good ground location is located on the bare metal under the dash just below and left of the steering plate behind the hood release lever. Verify the turn signal working properly before replacing any trim pieces, door panels, plastic moldings to finish installation.



*To Happy and Safe
Towing!*